

# D.A.V. Public School

## Sector – 3 Dhurwa Ranchi – 4

Term III Exam 2017-2018

Class XI

FM –70

Subject : Physics

Time – 3.00 Hours

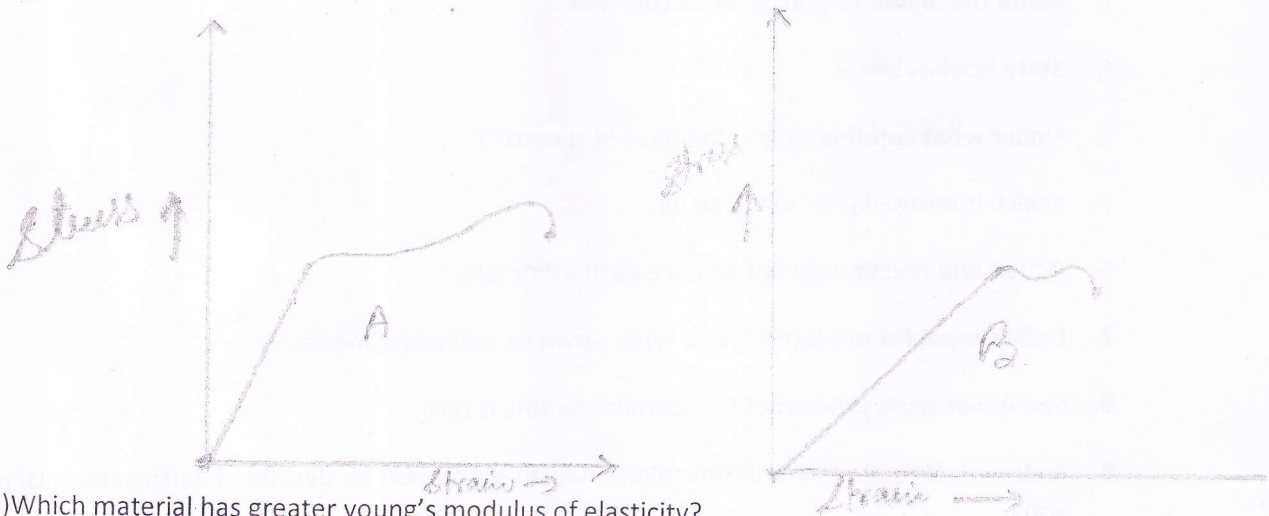
- ALL QUESTION ARE COMPULSORY.
  - Q1-Q5 CARRIES 1 MARK EACH
  - Q6-Q10 CARRIES 2 MARK EACH
  - Q11-Q23 CARRIES 3 MARK EACH
  - Q24 CARRIES 4 MARK EACH
  - Q25-Q27 CARRIES 5 MARK EACH
1. All constant are dimensionless comment.
  2. Write the SI unit of gravitational constant
  3. State hookes law.
  4. Under what condition the relation  $s = ut$  is correct
  5. Which is more elastic: water or air.
  6. Action and reaction do not balance each other why?
  7. Define modulus of elasticity and write down its unit and dimension?
  8. Show that cross product of two parallel vectors is zero.
  9. assuming earth to be a uniform sphere find an expression for density of earth in term Of  $g$  and  $G$
  10. Why does not the pressure of atmosphere breaks window?
  11. What is terminal velocity and derive an expression for it.
  12. A satellite is revolving is a circular path close to a planet of density  $\rho$ , find an expression for its period of revolution?
  13. Still water runs deep. Explain?
  14. What is escape velocity of moon? Explain why moon has no atmosphere?
  15. (a) A restoring force is must for a body to execute SHM Explain, why  
(b) Show graphically total energy possessed by a particle executing simple harmonic motion.  
(c) Can velocity and acceleration be in the same direction in an SHM?
  16. On what principle hydraulic lift works? Explain working mechanism of hydraulic lift.

17. Calculate the height to which water will rise in capillary tube of 1.5 mm diameter. Surface tension of water is  $7.4 \times 10^{-3}$  n/m.
18. Explain the phenomenon of surface tension on the basis of the molecular theory.
19. The soldier marching on a suspended bridge are advised go out of step .why?
20. How far away from the centre of earth does the value of g is reduced to 4% of its value on the surface of the earth .given radius of earth = 6400km.
21. Obtain an expression for variation of acceleration due to gravity with height.
22. Bernoulli's equation states that " For a liquid in streamline flow i.e. for an ideal liquid the sum of pressure energy, potential energy and kinetic energy per unit volume always remain same throughout the motion."

$$P + \frac{1}{2} \rho v^2 + \rho gh = \text{constant}$$

23. Find expression for (1) potential energy (2) kinetic energy (3) total energy for an artificial satellite.

24. The stress - strain graph for two materials A and B are shown in graph:



(a) Which material has greater young's modulus of elasticity?

(b) Which of the two is stronger material?

(c) Which material is more ductile?

(d) Which is more brittle?

25. What is simple pendulum? Find an expression for time period and frequency of a simple pendulum?

26. Explain why

- (a) The angle of contact of mercury with glass is obtuse, while that of water with glass is acute .
- (b) Surface tension of a liquid is independent of area of surface
- (c) Water with detergent dissolved in it should have small angles of contact.
- (d) A drop of liquid under no external forces is always spherical in shape.

(e) Water on a clean surface tends to spread out while mercury on the same surface tends to form drops.

27. A simple harmonic motion is represented by

$$x = 10 \sin (20 t + 0.5)$$

Write down its amplitude, angular frequency, frequency, time period and initial phase, if displacement is measured in meters and time in seconds.

D.A.V. PUBLIC SCHOOL SECTOR – 3 DHURWA RANCHI – 04  
FINAL TERM EXAMINATION (2017 – 2018)

Class – XI  
Subject – Chemistry

F.M. = 70  
Time – 3 hrs.

General Instructions:

- (i) All questions are compulsory.
- (ii) Questions number 1 to 5 are very short answer questions and carry 1 marks each.
- (iii) Questions number 6 to 10 are short answer questions and carry 2 marks each.
- (iv) Questions number 11 to 22 are also short answer questions and carry 3 marks each.
- (v) Question number 23 is a value based question and carry 4 marks.
- (vi) Questions number 24 to 26 are long answer questions and carry 5 marks each.
- (vii) Use of calculators is not allowed.

Q.1 State Boyle's Law ?

Q.2 Write the IUPAC name of an element having atomic number 102 ?

Q.3 Write the electronic configuration of Cu?

Q.4 Write the expression for the equilibrium constant for the reaction.



Q.5 Why does Boron trifluoride behave as Lewis acid ?

Q.6 (a) What is redox reaction

(b) Identify the substance reduced in the following reaction



Q.7 What is the standard enthalpy of formation. Out of  $\text{C}_{(\text{diamond})}$  and  $\text{C}_{(\text{graphite})}$  whose enthalpy of formation is taken as zero and why?

Q.8 Balance the following redox reaction in acidic medium by ion electron method



Q.9 Write two difference between a sigma bond and a pi bond .

Q.10 Calculate the mass of sodium acetate required to make 500ml of 0.375 molar aqueous solution. Molar mass of sodium acetate is  $82 \text{ g mol}^{-1}$

Q.11 Assign a reason for each of the following statements.

(a) Alkali metal dissolve in liquid ammonia to give deep blue solution

(b) Beryllium and magnesium do not give colour to the flame whereas other alkaline earth metal do so.

(c) Potassium carbonate cannot be prepared by solvay process.

Q.12 (a) State Heisenberg's uncertainty principle.

(b) List the quantum numbers for 3d orbitals.

(c) Write the electronic configuration of  $\text{Cu}^+$ .

Q.13 Assign reason for each of the following statements.

(a) First ionization enthalpy of boron (Z=5) is slightly less than that of beryllium (Z=4)

(b) Electron gain enthalpy of F is less negative than chlorine (Cl)

(c) The size of anion is always larger than that of parent atom.

Q.14 Give one method of preparation of  $\text{H}_2\text{O}_2$ . Write chemical reactions to justify that  $\text{H}_2\text{O}_2$  can function as an oxidizing as well as reducing agent. Write its two uses.

Q.15 (a) Deduce the structure of (i)  $\text{BrF}_5$  (ii)  $\text{PF}_5$  on the basis of VSEPR theory

(b) Which out of  $\text{NH}_3$  and  $\text{NF}_3$  has higher dipole moment and why.

OR

(a) Explain why the bond order of  $\text{N}_2$  is greater than  $\text{N}_2^+$ , but the bond order of  $\text{O}_2$  is less than that of  $\text{O}_2^+$ .

(b) Explain why  $\text{BeH}_2$  has zero dipole moment although  $\text{Be} - \text{H}$  bonds are polar

Q.16 Write short notes on the following :

(a) BOD (b) Photochemical Smog (c) Ozone hole

Q.17 A compound is composed of 74 % C, 8.7 % H, and 17.3 % N. Determine the empirical formula of the compound. If the molecular mass of the compound is 162, what is its molecular formula.

Q.18 (a) How will you convert Benzene into the following:

(i) acetophenone (ii) m-nitrochlorobenzene

(b) Write the structures of products obtained by ozonolysis of pent-2-ene.

Q.19 Explain the following reaction with the help of one example each :

(a) Wurtz reaction (b) Friedel - Craft alkylation reaction (c) Kharasch effect

Q.20 (a) Carbon show the property of catenation. Why ?

(b) At  $25^\circ\text{C}$  and 760 mm of Hg pressure a gas occupies 600 ml volume. What will be its Pressure at a height where temperature is  $10^\circ\text{C}$  and volume of the gas is 640 ml.

Q.21 Explain the following with the help of an example:

(a) Inductive effect (b) Hyperconjugation effect (c) carbocation intermediates

Q.22 Give reason for the following statements.

(i) Boron is unable to form  $\text{BF}_6^{3-}$ .

(ii) Stability of +1 oxidation states progressively increases for the heavier elements of group 13.

(iii) Graphite is used as a dry lubricant in machines running at high temperature.

OR

What happens when

(i) Sodium metal is dropped in water ?

(ii) Sodium metal is heated in free supply of air ?

(iii) Sodium peroxide dissolve in water ?

Q.23 At a sweet shop in dilshad Nagar, Rahul bought some sweets. He requested to sale girl

to put the sweet box in a polythene bag. The sales girl refused to do so, Instead, she kept the sweet box in a paper bag. After reading the above passage answer the following:

(a) Why did the sales girl refuse to put the sweet box in a polythene bag ?

(b) As a student of chemistry, why would you advocate the use of paper bags instead of polythene bags?

(c) Which value is promoted through the use of paper bag ?

(d) Suggest one activities to promote these values.

Q.24 (a) Is the entropy of universe constant ?

(b) If standard free energy change for a reaction is found to be zero, what is its Equilibrium constant?

(c) Determine the value of  $\Delta H$  and  $\Delta U$  for the reversible isothermal evaporation of 90 g of water at  $100^\circ\text{C}$ . Assume that water vapour behave as an ideal gas and

heat of evaporation of water is 540 cal. ( $R = 2.0 \text{ cal. Mol}^{-1} \text{ K}^{-1}$ ).

OR

Write the structural formula of :

- (a) o- Ethyl anisole (b) p- Nitroaniline (c) 2,3 - Dibromo - 1 - phenyl pentane  
(d) 4 - Ethyl - 1- fluoro - 2 - nitrobenzene (e) 3 - Ethyl - 5 - methyl heptane.

Q.25 (a) Define :

- (i) Common ion effect (ii) Solubility product (iii) Buffer solution.  
(b) Calculate the degree of ionization of 0.1 mol/L solution of acetic acid, given  $K_a$  for  $\text{CH}_3\text{COOH}$   $1.8 \times 10^{-5} \text{ mol/L}$ .

OR

- (a) State Markownikoff's rule. Using this rule write the reaction of propene with:  
(i) HBr (ii)  $\text{H}_2\text{O}$   
(b) Carry out the following conversions:  
(i) Ethyl alcohol to ethene (ii) Sodium acetate to methane (iii) Benzene to Chlorobenzene.

- Q.26 (a) Calculate the wavelength of an electron moving with a velocity of  $2.05 \times 10^7 \text{ ms}^{-1}$ .  
(b) What is the lowest value of  $n$  that allows  $g$  orbitals to exist ?  
(c) What is the equation of state for real gas ?  
(d) State Amonton's law ?  
(e) What is hybridization of carbon atom in formic acid and formaldehyde solution .

OR

- (a) Draw the structure of  $\text{H}_2\text{SO}_5$  and  $\text{H}_3\text{O}^+$   
(b) Write the IUPAC name of the following compound :  
(i)  $\text{CH}_3 - \text{CH}_2 - \text{CONH}_2$  (ii)  $\text{CH}_3\text{CH}_2 \text{CH}(\text{OH}) \text{COOH}$ .  
(c) Draw the structure of  $\text{B}_2\text{H}_6$  and define banana bond.  
(d) What is formalin solution?  
(e) State the principle of Chromatography.

Time Allowed : 3 Hrs

Maximum Marks: 100

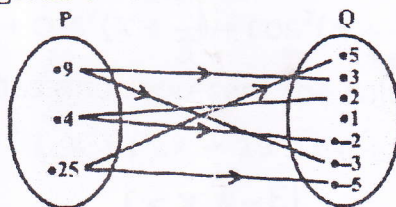
- All questions are compulsory.
- The question paper consist of 29 questions divided into three sections A, B and C. Section A comprises of 10 questions of one mark each, section B comprises of 12 questions of four marks each and section C comprises of 07 questions of six marks each.
- All questions in Section A are to be answered in one word, one sentence or as per the exact requirement of the question.
- There is no overall choice. However, internal choice has been provided in 04 questions of four marks each and 02 questions of six marks each. You have to attempt only one of the alternatives in all such questions.
- Use of calculators is not permitted. You may ask for logarithmic tables, if required.

Section A

- Let  $A = \{ x : x = 2n, n \in \mathbb{Z} \}$  and  $B = \{ x : x = 3n, n \in \mathbb{Z} \}$ , then find  $A \cap B$ .
- From the given table, is  $y$  a function of  $x$ . Justify your answer?

$x$	-2	-1.5	-1	-0.5	.25	.5	1	1.5	2
$\frac{1}{x}$	-0.5	-0.67	-1	-2	4	2	1	.67	.5

- Find the value of  $\left(\frac{1}{i}\right)^{25}$
- Write the negation of the given statement  
P: Every rectangle is a quadrilateral.
- Write the given statement in the form "If- then", and state what are the component statements  $p$  and  $q$   
If I have the money, i will buy an i-phone
- Write the hypothesis and the conclusion in the given implication. If one root of a quadratic equation is  $a + ib$  then the other root of the quadratic equation is  $a - ib$ .
- Find the equation of the ellipse whose vertices are  $(\pm 13, 0)$  and foci are  $(\pm 5, 0)$ .
- If  $(x, y)$  is a point on the hyperbola, then give three other points that lie on it
- The figure below gives a relation. Write it in the roster form



- Find the equation of the set of points which are equidistant from the points  $(1, 2, 3)$  and  $(3, 2, -1)$

SECTION B

11. Find the values of 'k' for which  $-\frac{2}{7}, k, -\frac{7}{2}$  are in G.P. Find the common ratio/s of the GP
12. If  $1 + \frac{(1+2)}{2} + \frac{(1+2+3)}{3} + \dots$  to n terms is S, then find S.
13. Evaluate  $\left| \frac{1+i}{1-i} - \frac{1-i}{1+i} \right|$

OR

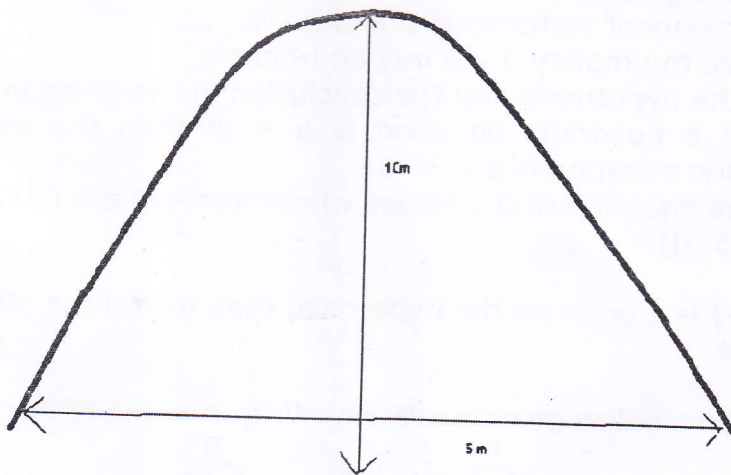
If  $(a + i b) (c + id) (e + if) (g + i h) = A + i B$ , then show that  $(a^2 + b^2) (c^2 + d^2) (e^2 + f^2) (g^2 + h^2) = A^2 + B^2$

14. Solve the given quadratic equation:  $9x^2 - 12x + 20 = 0$
15. What is the number of ways in which a set of 5 cards can be chosen out of a deck of 52 cards if each set of 5 cards has exactly one ace?
16. Find the coefficient of  $x^5$  in the expansion of the product  $(1 + 2x)^6(1 - x)^7$
17. Show that  $\tan 3x \tan 2x \tan x = \tan 3x - \tan 2x - \tan x$
18. Prove that  $\frac{\sec 8A - 1}{\sec 4A - 1} = \tan 2A$

OR

If  $\frac{\pi}{2} < x < \pi$  and  $\sin x = \frac{1}{4}$ , find  $\tan \frac{x}{2}$

19. Let  $A = \{a, e, i, o, u\}$  and  $B = \{a, i, k, u\}$ . Find  $A - B$  and  $B - A$ . Are the two sets  $A - B$  and  $B - A$  (i) equal (ii) mutually disjoint. Justify your answer.
20. The entrance of a monument is in the form of a parabolic arch with a vertical axis. The arch is 10 m high and 5 m wide at the base. How wide is it 2 m from the vertex of the parabola?



21. Draw the graph of  $f(x) \begin{cases} 3 - x, & x > 1 \\ 1, & x = 1 \\ 2x, & x < 1 \end{cases}$  and find the Range of f.



OR

Draw the graph of  $f(x) \begin{cases} 1, & x \geq 1 \\ x & -1 < x < 1 \\ -1, & x \leq -1 \end{cases}$  and find the Range of  $f$

22. Let  $A = \{a, b, c, d\}$  and  $B = \{p, q, r\}$ . Write an example of onto and into function from  $A$  to  $B$ . Does there exist a one-one function from  $A$  to  $B$ . Justify your answer.

SECTION C

23. Using mathematical induction prove the following :

$$\frac{1}{1.2.3} + \frac{1}{2.3.4} + \frac{1}{3.4.5} + \dots + \frac{1}{n(n+1)(n+2)} = \frac{n(n+3)}{4(n+1)(n+2)}$$

24. (i) A box contains 10 red marbles, 20 blue marbles and 30 green marbles. 5 marbles are drawn from the box, what is the probability that  
 (i) all will be blue? (ii) at least one will be green?

(ii) A die has two faces each with number '1', three faces each with number '2' and one face with number '3'. If die is rolled once, determine

25. The mean of 8, 6, 7, 5,  $x$  and 4 is 7. Find (i) the value of  $x$  (ii) the mean if each observation was multiplied by 3 (iii) the mean deviation about the median for the original data

26. Find the derivative of  
 (i)  $\sin(x+1)$  by the abinitio method

(ii)  $\frac{x}{1+\tan x}$

OR

Evaluate the limits of the following two functions of  $x$

(i)  $\lim_{x \rightarrow 1} \left[ \frac{x-2}{x^2-x} - \frac{1}{x^3-3x^2+2x} \right]$

(ii)  $\lim_{x \rightarrow 0} \frac{\sin 4x}{\sin 2x}$

27. Find the length of the perpendicular drawn from the points

$(\sqrt{a^2 - b^2}, 0)$  and  $(-\sqrt{a^2 - b^2}, 0)$  to the line  $\frac{x}{a} \cos \theta + \frac{y}{b} \sin \theta = 1$

Show that their product is  $b^2$ .

28. Prove that  $\cos^2 x + \cos^2(x + \frac{\pi}{3}) + \cos^2(x + \frac{2\pi}{3}) = \frac{3}{2}$

29. Solve the inequalities and represent the solution graphically

$5(2x - 7) - 3(2x + 3) \leq 0$ ;  $2x + 19 \leq 6x + 47$  and  $7 \leq \frac{(3x+11)}{2} \leq 11$

OR

How many litres of water will have to be added to 1125 litres of the 45% solution of acid so that the resulting mixture will contain more than 25% but less than 30% acid content?

# D.A.V. Public School

## Sector – 3 Dhurwa Ranchi – 4

Class XI

Term III Exam 2017-2018

FM – 70

Biology

Time –3.00 Hours

### General Instruction:

- All questions are compulsory.
- The question paper consists of five sections
- Section A contains questions 5 questions of 1 mark each.
- Section B contains 5 questions of 2 marks each.
- Section C contains 12 questions of 3 marks each.
- Section D contains 1 question of 4 marks each.
- Section E contains 3 questions of 5 marks each.

### Section A

1. Which of the phase of cell cycle is of longest duration?
2. What determines the water potential of a cell?
3. Name the elements which are structural components of cell in plants?
4. What is photosynthesis?
5. What is glycolysis?

### Section B

6. Mention two steps of glycolysis in which ATP is utilised?
7. Mention two causes of seed dormancy?
8. Name two enzymes present in saliva and mention their function?
9. What are the function of liver?
10. Differentiate between vital capacity and total lung capacity?

### Section C

11. What is vital capacity? What is its significance?

12. Describe the digestion of protein in the stomach?
13. Name the enzymes present in Pancreatic juice. Mention their role on digestion?
14. What is PEM? What are their types?
15. Name and explain three phases of growth in plants?
16. What is apical dominance? Which hormone control it?
17. What is abscission? Name the phytohormone involved in it?
18. What is the significance of step wise release of energy in respiration?
19. Discuss the respiratory path way?
20. Explain the significance of splitting of water during the photochemical phase of photosynthesis?
21. What is PEP? Explain its role in photosynthesis?
22. Write the deficiency symptoms of the following elements
  - i) Phosphorus
  - ii) Magnesium
  - iii) Potassium

#### **Section D**

23. For the last few days, Radhika was feeling of fullness even she was not taking her normal meals?
  - a) With what disorder she was suffering from?
  - b) Write any four reasons of such a disorder?
  - c) Name any digestive disorder that may lead to dehydration?

#### **Section E**

24. Draw a labelled diagram of human respiratory system?
25. Give the schematic respiration of an overall view of krebs cycle?
26. Differentiate between photosystem I and potosystem II?

# D.A.V. Public School

## Sector – 3 Dhurwa Ranchi – 4

Class XI

Term III Exam 2017-2018

Maximum Marks – 70

Subject: Computer Science

Time Allowed – 3.00 Hours

### ||||| General Instructions: |||||

- ❖ This question paper comprises of four sections A, B, C, D and E you are to attempt all the sections
- ❖ All questions are compulsory
- ❖ There is no choice
- ❖ Question numbers 1 to 9 in section A are one(1) mark questions
- ❖ Question numbers 10 to 19 in section B are two(2) mark questions
- ❖ Question numbers 20 to 23 in section C are three(3) mark questions
- ❖ Question numbers 24 to 29 in section D are four(4) mark questions
- ❖ Question numbers 30 in section E are five (5) mark question

### Section A

1. Name the super computers developed in India? [1]
2. What is the difference between copying and moving a file? [1]
3. What is difference between a character and a string constant in C++? [1]
4. What is utilities software? Write any one example. [1]
5. Write any two key features of fifth Generation computer? [1]
6. Which of the following are hardware and software? [1]  
(i) Capacitor (ii) Internet Explorer (iii) Hard disk (iv) UNIX
7. Predict the output of the following code fragment: [1]  

```
#include<iostream.h>
void main ( )
{
    int a, b=20;
    a = 90/b;
    cout<< "Value of a is:"<<a;
}
```
8. Name three logical operators? [1]
9. Differentiate between / and % operator? [1]

### Section B

10. How is a compiler different from interpreter? [2]
11. What do you understand by application software? [2]

12. Name the header files to which the following belongs to :

(i) getch( ) (ii) isdigit( ) (iii) sqrt( ) (iv) pow( )

13. Write the equivalent C++ expressions:

(i)  $p = 2(1+b)$

(ii)  $z = 2(p/q)^2$

(iii)  $s = 1/2mv^2$

(iv)  $x = -b+(b^2-4ac) \div 2a$

14. Write difference between keyword and identifier? [2]

15. Write differences between Unary Operator and Binary Operator [2]

16. Find the error from the following code segment and rewrite the corrected code [2]

underlining the correction made:

```
mair.()
{
    Int a, b;
    cin<< "Enter the two numbers";
    cin>>a<<b;
    c = a+b;
    cout>>c;
}
```

17. Differentiate between testing and debugging? [2]

18. How can you give a single line and multiline comments in C++ explain with suitable examples? [2]

19. Write the two advantages and disadvantages of Algorithm? [2]

### Section C

20. Write steps required to develop a program and explain the steps briefly? [3]

21. Draw a flowchart to calculate sum of two numbers? [3]

22. What output will the following code fragment produce? [3]

```
int val, res, n = 1000;
cin>>val;
res = n + val > 1750 ? 400 : 200;
cout <<res;
```

a. If the input is 2000      b. If the input is 1000      c. If the input is 500

23. Write a program that inputs radius and calculates volume of a sphere using [3]

the following formula :

$$\text{Volume} = \frac{4}{3} \pi r^2$$

### Section D

24. Write the description for following Escape Sequence: [0.5\*8=4]

i. \b

ii. \0

iii. \n

iv. \t

- v. \?                      vi. \a                      vii. \r                      viii. \f

25. Write syntax and explanation of switch case statement? [4]

26. Define the following terms: [1X4=4]

- i. Flowchart                      ii. Algorithms  
iii. Token                      iv. Operators

27. i) Write a C++ program to print table of a given number? [2X2=4]

ii) Write a C++ program to calculate the factorial of an integer?

28. i) Which punctuator is treated as an end of line marker in C++? [1X4=4]

ii) Write the name of any four keywords used in C++ program?

iii) Name the general extension of a C++ program?

iv) Write the name of any four Bitwise Operators used in C++ program?

29. Convert the following into its binary equivalent codes: [1X4=4]

i.  $(84)_{10} = (?)_2$                       ii.  $(2C9)_{16} = (?)_{10}$

iii.  $(101010)_2 = (?)_{10}$                       iv.  $(3674)_8 = (?)_2$

### Section E

30. What will be the output of the following code fragment if the input is : [1X5=5]

- i. a                      ii. c                      iii. d                      iv. h                      v. b

```
cin >> ch;
switch(ch){
    case 'a': cout<< "It is a.\n";
    case 'b': cout<< "It is b.\n";
    case 'c': cout<< "It is c.\n";
               break;
    case 'd': cout<< "It is d.\n";
               break;
    default: cout<<"Not a b c d.";
```



# D.A.V. Public School

Sector – 3 Dhurwa Ranchi – 4

TERM-3 (Annual Examination 2017-18)

Class XI

FM – 70

Subject: Physical Education

Time – 3.00 Hours

## General Instruction:

- This question paper consists of 26 questions
- All questions are compulsory
- Answer to questions carrying 1 mark should be in approximately 10 to 20 words
- Answer to questions carrying 3 mark should be in approximately 30 to 50 words
- Answer to questions carrying 5 mark should be in approximately 70 to 100 words

## Section A

1. Define Physical activity. [1]
2. What is Pranayama? [1]
3. What do you mean by measurement? [1]
4. Define Biomechanics. [1]
5. Define BMI and how it is calculated? [1]
6. Define Anatomy. [1]
7. What do you understand by endomorphy? [1]
8. Name the award winners of Dronacharya award, Arjuna award. [1]
9. Define endurance. [1]
10. What do you mean by obesity? [1]
11. What is the meaning of Physical fitness? [1]

## Section B

12. Rakesh was a good high jumper of our school. He used to do strenuous training. During practice he used to jump 1.55 m. His intention was to win medal at the state level tournament. But his technique was not proper for winning a medal at such level. He showed interest in learning the new technique i.e. fosbury flop. His coach helped him in learning this technique and made him perfect. Ultimately he learnt the new technique of high jump. His performance was enhanced extraordinarily. Consequently, he won the gold medal in high jump event by clearing a height of 1.75 m. It was remarkable achievement for him. [3]

**Based on the above passage, answer the following questions :**

- a) What value of the coach did impress you?
  - b) What value does Rakesh possess?
  - c) Was achievement of Rakesh remarkable in comparison to his past performance?
13. What do you Mean by Waist-Hip Ratio? [3]
  14. Write a short note on Indian Olympic Association? [3]

15. "Yoga is an Indian Heritage" elaborate this statement? [3]
16. Discuss any three essential elements of sports environment? [3]
17. Explain the prevention and management of diabetes? [3]
18. Discuss *Classification of Bodytypes According to ERNEST KRETCHMER*. [3]
19. Briefly mention the importance of yoga? [3]

### Section C

20. Describe the changing trends and careers in physical education in details? [5]
21. Discuss about the organisational set up of CBSE sports? [5]
22. Define physical activity and discuss the types of physical activities? [5]
23. Define leadership and discuss the quantities of leadership and its roles? [5]
24. What are the safety measures during physical activity and adventure sports? [5]
25. What do you mean by Body Mass Index? Explain then Procedure of calculation of BMI. [5]
26. Give detailed notes on any two of the following : [5]
  - (a) Yogic Kriyas
  - (b) Prevention and management of back pain.



D A V Public School

Sec: III , Dhurwa Ranchi.

Annual exam 2017-2018

Sub: English

FM:100

Class: XI

Time: 3 hours

General instructions:

(i) This paper has three sections viz A, B, C and D. All the sections are compulsory.

Section : A – Reading

20 marks

Section : B - Writing & Grammer

40 marks

Section : C – Text Books & Long Reading Text

40 marks

ii) Read the instruction carefully and follow them.

### SECTION:A

1. Read the passage carefully:

[20 marks]

This is a Nelson Mandela story that will never make it to the official narrative. World leaders paid their tribute in South Africa, but at the Rashtrapati bhavan in Delhi, where Nelson Mandela twice stayed, a butler remembers him as the man who waved good-bye.

Barak Obama met Mandela once. But Maqbol, neither a president nor a politician, probably got to see the real Mandela. He was on duty twice when Madiba (Mandela) came to India. For the famous world leader, Maqbool was not just a faceless man in uniform, but a real person.

Maqbool, who will retire by the middle of next year, has been around longer than most of the President's men. His relationship with the Rashtrapati Bhavan goes back 60 years. He grew up in the sprawling green of Lutyens Estate and Followed his father into the service. And, in his vast expanse of memories, the Mandela moments occupy a special place. " Hume bola gaya tha ki ek Gandhi aayenge [ We were told that a Gandhi was coming for a visit], "he says with a smile. " We didn't know who he was then."

Much to Maqbool's disappointment, Mandela did not look like Gandhi. He was charmed nevertheless. " His hands were very strong," he says "You could tell that he

had done physical labour." For Maqbool, who dealt with many heads of state, Mandela seems to be special not just because of the similarities with Gandhi, but also because of impression Madiba made on him." He called all of us and asked us to write down our names. We did. He then copied them and gave us all his autobiography. I still have mine, but I didn't realize the value of it then," he says.

The man who famously always free-even when was in prison for 27 years-came to India first in 1990 and then as president of south Africa in 1995 and was conferred with Bharat Ratana the heighest civilian honour. Power did not seem to affect him to the way he treated people." He always spoke softly. He was unfailingly polite, calm and ery patient. "says Maqbool.

He even travelled with President A.p.j Abdul Kalam when he went South Africa." I saw Mandela's cell," he says It was small. It is difficult to imagine how he spent those years in prison, but if you look at his photographs, you cannot find one that doesn't have him smiling. He had a smile on his face always.

In speech on December 10, President Pranab Mukherjee said Mandela was " a towering personality of great compassion and wisdom." Maqbool didnt hear that speech but his experience is a proof that words were true. Most VIPs don't walk out the door after their visit. Mandela was different. He didn't let security push away. Then he shook hands with each one us and thanked us,"says Maqbool. Madiba was indeed special.

**1.1 Answer the following question in short:**

**[6 marks]**

(a) Why was Maqbool disappointed?

- i) He did not get the opportunity of meeting Mandela.
- ii) He couldn't meet Barak Obama.
- iii) Mandela did not resemble Gandhiji.
- iv) None of the above.

(b) Mandela was special to Maqbool because his nature was similar to:

- i) Gandhiji
- ii) Barak Obama
- iii) Lal Bhadur shastri
- iv) Ana Hazare

2. Read the passage carefully:

[8 marks]

We know that animal species have appeared and disappeared continually since life began on Earth. This is a natural phenomenon. However, species have been vanishing at a much faster rate for about a century now. Thanks to human factors such as pollution, commercial over exploitation, poaching and deforestation. Well, so what? Is really that important to protect every species of animal on our planet?

Certain Philosopher and scientist keep repeating if we do not save the animals, how we will able to save our slaves? A better knowledge and understanding of animals gives us a better understanding of animals gives us a better understanding of our species. The will to protect animals and nature in general demonstrates the value of society. And, if the optimal development of resources is a priority, it must be achieved not economically or socially, but environmentally as well. This is the vision of sustainable development which dictates that we use natural resources wisely for the benefit and enjoyment of future generations.

In nature everything is interconnected. Unfortunately, we often have very little idea of all the repercussion involved in the disappearance of a single animal population in a corner of a forest, swamp or river. Imagine the impact of clear cutting on the development of a new residential area of those of filling a swamp in order to build a road. Imagine that pollutants are emptied into the mouth of the river what would happen? Obviously, the shrubs, trees, aquatic plants and algae would be contaminated, die or disappear. Browsing animals would then be obelised to leave the area owing to lack of food sources. Next, predators large and small would be deprived of the prey they need to survive. And so on and so forth. Disruption and imbalance are the hall marks of the nature modified and remodelled by humans and since every animal plays a specific role in the food chain and the balance of nature, the entire natural world would be turned on its head.

Nature can be viewed as a huge pharmacy; it contains thousands of components essential to man's survival. Therefore the animal's world is in a way part of our survival kit used since the 19<sup>th</sup> century. Leeches are now employed in surgery because of anticoagulant and anti-inflammatory properties of saliva. The elements of the Brazilian Vipers venom have been synthesized into a medication that controls blood pressure. Scorpion venom is used in research on brain tumours. Sharks contribute to study of muscle de-generation and certain forms of cancer. Bee honey improves human health by targeting and attacking certain microbes in our organism.

(c) What occupies a special place in Maqbool's memories?

- i) Lutyens Estate
- ii) Rashtrpati bhawan
- iii) His moments with Gandhiji
- iv) His moments with Mandela

(d) India conferred President Mandela with:

- i) Nobel peace prize
- ii) Bharat ratana
- iii) Arjuna
- iv) Khel Ratana

(e) Towering personality in the passage means:

- i) Very tall person
- ii) A great or pre-eminent person.
- iii) Promising person
- iv) Huge person

(f) The word **Tribute** in the above passage means:

- i) Respect
- ii) Dignity
- iii) Praise
- iv) Adore

**1.2 Answer the following question briefly:**

**[6 marks]**

- 1) How did Maqbool meet Nelson Mandela?
- 2) What qualities in Mandela impressed everybody in Rastrapati bhawan ?
- 3) What does president Abdul Kalam comment about Mandel's prison day?
- 4) How did medba different from other VIP's?
- 5) Find other words from the passage which means same as the following:
  - (a) Constant, incapable of error (para)
  - (b) A male servant (para1)

microbes in our organism. Plants also play a crucial role in our health. Of the 150 medicines most frequently prescribed about a hundred are derived from plants.

- (a) On the basis of your reading the passage, make notes on it using recognizable abbreviations wherever necessary. Supply a suitable title. [5 marks]
- (b) Write a summary of the above passage in about 80 words. [5 marks]

**SECTION : B**

3. The year 2014 is a centenary of World War I. Your school has organised an Inter school Elocution competition on the "Stop wars, give peace a chance." Write a notice to be put on the school notice board. Give all necessary details. You are Amit/Amiti school pupil leader of D.A.V Public school, Dhurwa. [5 marks]

Or

As the Principal of your school, write a notice to informing the students about the special coaching in cricket, basketball and Tennis during the summer vacation.

4. The manager of ICICI Bank, Hyderabad, requires smart business development managers for their credit card section. Draft an advertisement to be published in the "classifieds" column of The Hindustan Times. [5 marks]

Or

You want to dispose off your old car. Prepare an advertisement to be published in the 'for sale' column of a newspaper.

5. As the head boy of your school, write a letter to the principal requesting him to improve the school canteen. The hygiene conditions as well as the menu improved. [10 marks]

Or

Incidents of serious fire accidents on train's buses are on the rises. The recent Volvo bus fire accident and several train fire accidents are some of the recent examples. As a concerned citizen write a letter to the editor of the Ranchi edition "Times of India" expressing your anguishing at the loss of innocent lives in such accidents. Give suggestions how such fire accident can minimized.

6. Dance as shown in some reality shows on TV seems to be a mix of Gymnastics and PT exercise. Actually it is neither. India has a rich tradition of classical and folk dances. Write an article in 150-200 words on the need to have a reality show exclusively based on Indian classical dances. You are Aman /Anita. [10 marks]

Or

You are disturbed by the fact that the students of today undergo a lot of stress and pressure in life. You have found peace and relaxation by participating yoga. You wish to share your experience with the students of your school. Prepare a speech to be given in the morning assembly on "The benefit of yoga."

7. Rearrange the sentence:

[5 marks]

- i) Number one/is/eradicate/to/poverty/millennium development/goal.
- ii) Knowledge/to/everyone/has/share/to/learn/and/can/other's/inspire/everyone.
- iii) we/make/life/it/is/what.
- iv) till/you/come/wait/here/shall/I
- v) lest/miss/the/train/you will/walk fast
- vi) the book/out of /print/is/your/mentioned/which
- vii) where/gone wrong/we have/understand/I/don't
- viii) Sarla/does/know/the guest/are/arriving/when?
- ix) he goes/where ever/will find/the police/him.
- x) do not hurry/miss the train/you will/if you

8. Correct the following sentence:

[5 marks]

- i) The house who is next to ram's is for sale.
- ii) That ram will come here it is certain.
- iii) he showed me the man that brother stole my money.

- iv) Can you show me the man about you which you used to talk so much.
- v) My brother that is in the police will come to meet tomorrow .
- vi) Something worries me may not worry you.
- vii) Whom has come? I saw a man which wore a red shirt.
- viii) The function ended today was really good.
- ix) The police are looking for a thief he stole a camera.
- x) That you may come or not I am not interested in it.

**SECTION: C**

**9. Read the following extract and answer the questions that follow.**

**[6 marks]**

“A sweet face,  
My mother’s that was before I was born  
And the sea, which appears to have changed less  
Washed their terribly transient feet”

- a) How was mother before the poet’s birth?
- b) What/Who has not changed much?
- c) What does the last line imply?

“ I do not understand this child  
Though we have lived together now  
in the same house for years.”

- a) Who is the child in the above liens?
- b) What is ironic about their relationship?
- c) Name the poem and the poet?

**10. Answer the following questions in about 40 words each.**

**[14 marks]**

- i) What does Khuswant Singh described in “ The Portriat of a Lady”
- ii) Which incident has been captured in the snapshot?

- iii) What do you think does the poetess say nothing about her mother's from 'A Photograph'
- iv) What do you know about the Green Movement?
- v) Why do you think does the father appears the helpless?
- vi) Write two instance of iron from the poem 'The Tale of Melcon City'
- vii) What was the history teacher's opinion of Albert?

**11. Answer the following question:**

**[8 marks]**

- a) What do think 'The Tale of Melon City' interesting and edifying?
- b) What message does, "We're not afraid to die-if can all be to gather" give?
- c) What did the narrator learn about Mrs. Dorling from her mother?
- d) Comment on the significance of the title of the story 'The Adress'

**12. Answer the following in brief:**

**[12 marks]**

- a) What happens at the end of the story. "The canterville Ghost" How do the Otises and the cantervilles bid farewale to the ghost?
- b) Is The Canterville Ghost a contrast of American and british culture?



D.A.V. PUBLIC SCHOOL DHURWA

SUBJECT- HINDI

हिन्दी (केन्द्रिक)

कक्षा-11 वीं

निर्धारित समय - 3 घण्टे

अधिकतम अंक - 100

निर्देश : इस प्रश्न-पत्र में तीन खण्ड हैं- क ख और ग। सभी खण्डों के उत्तर लिखना अनिवार्य है।

कृपया प्रश्न का उत्तर लिखना शुरू करने से पहले, प्रश्न का क्रमांक

अवश्य लिखें।

खण्ड-क

प्र.1:- निम्नलिखित गद्यांश को ध्यान पूर्वक पढ़िए तथा इससे संबंधित प्रश्नों के उत्तर दीजिए-

सत्य के अनेक रूप होते हैं, इस सिद्धान्त को मैं बहुत पसंद करता हूँ। इसी सिद्धान्त ने मुझे एक मुसलमान को उसके अपने दृष्टिकोण से और ईसाई को उसके स्वयं

के दृष्टिकोण से समझना सिखाया है। जिन अंधों ने हाथी का अलग-अलग तरह से वर्णन किया वे सब अपनी दृष्टि से ठीक थे। एक-दूसरे की दृष्टि से सब गलत थे, और जो आदमी हाथी को जानता था उसकी दृष्टि से वे सही भी थे और गलत भी।

जब तक अलग-अलग धर्म मौजूद हैं तब तक प्रत्येक धर्म को किसी विशेष वाह्य चिन्ह की आवश्यकता हो सकती है। लेकिन जब वाह्य चिंतन केवल आडम्बर बन जाते हैं अथवा अपने धर्म को दूसरे धर्मों से अलग बताने के काम आते हैं तब वे त्याज्य हो जाते हैं। धर्मों के भ्रातृ-मंडल का उद्देश्य यह होना चाहिए कि वह हिंदू को अधिक अच्छा हिंदू, एक मुसलमान को अधिक अच्छा मुसलमान और एक ईसाई को अधिक अच्छा ईसाई बनाने में मदद करे। दूसरों के लिए हमारी प्रार्थना वह नहीं होनी चाहिए - ईश्वर, तू उन्हें वहीं प्रकाश दे जो तूने मुझे दिया है, बल्कि यह होनी चाहिए - तू उन्हें वह सारा प्रकाश दे जिसकी उन्हें अपने सर्वोच्च विकास के लिए आवश्यकता है।

(क) उपर्युक्त गद्यांश का उचित भीर्शक लिखिए। 2

(ख) किसी भी धर्म के अनुयायी को उसी के दृष्टिकोण से देखने की समझ किस सिद्धान्त के कारण पैदा हुई ? 2

(ग) अंधों और हाथी का उदाहरण क्यों दिया गया है ? 2

(घ) धर्म के वाह्य चिन्हों को कब और क्यों त्याग देना चाहिए। 2

(ङ.) हमें ईश्वर से क्या प्रार्थना करनी चाहिए ? 2

प्र.2:- निम्नलिखित काव्यांश पढ़कर पूछे गए प्रश्नों के उत्तर दीजिए-

जो बीत गई सो बीत गई ।

जीवन में एक सितारा था,

माना, वह बेहद प्यारा था,

वह डूब गया, तो डूब गया।

अंबर के आनन को देखो,

कितने इसके तारे टूटे,

कितने इसके प्यारे छूटे

जो छूट गए फिर कहाँ मिले ;

पर बोलो टूटे तारों पर  
कब अंबर भोक मनाता है।

- (क) 'जीवन में एक सितारा था' कवि ने 'सितारा' भाब्द का प्रयोग किसके लिए किया है ? 1
- (ख) कवि ने क्या संदेश दिया है ? इससे उसके किस दृष्टिकोण का परिचय मिलता है ? 1
- (ग) अंबर को क्या-क्या सहन करना पड़ता है ? 1
- (घ) अंबर टूटे तारों पर भोक क्यों नहीं मनाता ? 1
- (ङ.) कवि ने अंबर का उदाहरण क्यों दिया है ? 1

अथवा

रोटी उसकी, जिसका अनाज, जिसकी जमीन, जिसका श्रम है ;  
अब कौन उलट सकता स्वतंत्रता का सुसिद्ध, सीधा क्रम है।  
आजादी है अधिकार परिश्रम का पुनीत फल पाने का,  
आजादी है अधिकार भोशणों की धज्जियाँ उड़ाने का।  
गौरव की भाशा नई सीख, भिखमंगों की आवाज बदल,  
सिमटी बाँहों को खोल गरुड, उड़ने का अब अंदाज बदल।  
स्वाधीन मनुज की इच्छा के आगे पहाड़ हिल सकते हैं ;?  
रोटी क्या ? ये अंबरवाले सारे सिंगार मिल सकते हैं।

- (क) आजादी क्यों आवश्यक है ? 1
- (ख) सच्चे अर्थों में रोटी पर किसका अधिकार है ? 1
- (ग) कवि ने किन पंक्तियों में गिड़गिड़ाना छोड़कर स्वाभिमानी बनने को कहा है ? 1
- (घ) कवि व्यक्ति को क्या परामर्श देता है ? 1
- (ङ.) आजाद व्यक्ति क्या कर सकता है ? 1

खण्ड—ख

प्र.3:- आकाशवाणी के निदेशक को रेडियो के कार्यक्रमों के बारे में सुझाव देते हुए एक

10

पत्र लिखिए।

अथवा

अपने मुहल्ले में दिन-प्रतिदिन बढ़ते बिजली संकट को लेकर विद्युत विभाग के मुख्य

अभियन्ता को पत्र लिखिए।

प्र.4:- निम्न में से किसी एक विशय पर 300 भाब्डों का एक निबंघ लिखिए- 10

- (क) नर हो न निराश करो मन को
- (ख) बढ़ते भाहर सिकुड़ते जंगल
- (ग) राजनीति और भ्रश्टाचार
- (घ) आजीविका और शिक्षानीति

प्र.5:- निम्नलिखित प्रश्नों के उत्तर संक्षेप में दीजिए-

10

- (क) संचार माध्यम कितने प्रकार के होते हैं ?
- (ख) जनसंचार किसे कहते हैं ?
- (ग) पत्रकारिता के पहलू कौन-कौन से हैं ?
- (घ) आजादी से पूर्व पत्रकारिता का लक्ष्य क्या था ?
- (ङ) पूर्णकालिक पत्रकार कौन होता है ?

प्र.6:- बाते कम काम ज्यादा विशय पर एक फीचर लिखिए ।

5

अथवा

रिश्वत का रोग विज्ञय पर एक फीचर लिखिए।

खण्ड-ग

प्र.7:- निम्नलिखित पद्यांश को पढ़कर उस पर आधारित प्रश्नों का उत्तर लिखिए-

हे भूख ! मत मचल

प्यास, तड़प मत

हे नींद ! मत सता

क्रोध, मचा मत उथल-पुथल

हे मोह ! पाश अपने ढील

लोभ, मत ललचा

हे मद ! मत कर मदहोश

ईश्या, जला मत

ओ चराचर ! मत चूक अवसर

आई हूँ संदेश लेकर चन्नमल्लिकार्जुन का।

- (क) कवयित्री भूख-प्यास, क्रोध-मोह आदि से क्या प्रार्थना करती है और क्यों ? 2
- (ख) कवयित्री किस अवसर से न चूकने की प्रेरणा देती हैं ? 2
- (ग) कवयित्री किसके प्रति समर्पित है ? 2
- (घ) काव्यांश में किस भौली का प्रयोग किया गया है। 2

अथवा

अपने चेहरे पर

संथाल परगना की माटी का रंग

भाशा में झारखंडीपन

ठंडी होती दिनचर्या में

जीवन की गर्माहट

मन का हरापन

भोलापन दिल का

अक्खड़पन, जुझारूपन भी

- (क) कविता में किस प्रदेश का प्रभाव दृष्टिगोचर होता है ? 2
- (ख) कवि किस प्रकार का जन-जीवन देखने को इच्छुक है ? 2
- (ग) 'ठंडी होती दिनचर्या' और 'जीवन की गर्माहट' का भाव स्पष्ट कीजिए। 2
- (घ) झारखंडीपन का अभिप्राय बताइए। 2

प्र.8:- निम्नलिखित काव्यांश पर पूछे गए प्रश्नों के उत्तर दीजिए-

संतो देखत जग बौराना।

साँच कहौं तो मारन धावै, झूठे जग पतियाना।।

नेमी देखा धरमी देखा, प्रात करै असनाना।

आतम मारि पखानहि पूजै, उनमें कछु नहिं ज्ञाना।।

बहुतक देखा पीर औलिया, पढ़ै कितेब कुराना।

- (क) काव्यांश की भाशा की दो विशेषताओं का उल्लेख कीजिए। 3
- (ख) शिल्प-सौन्दर्य स्पष्ट कीजिए। 3

अथवा

मेरे तो गिरिधर गोपाल, दूसरो न कोई

जा के सिर मोर-मुकुट, मेरो पति सोई

छांड़ि दयी कुल की कानि, कहा करिहै कोई ?

संतन ढिंग बैठि-बैठि, लोक-लाज खोयी

अंसुवन जल सींचि-सींचि, प्रेम-बेलि बोयी

- (क) काव्यांश की भाशा की दो विशेषताओं का उल्लेख कीजिए। 3
- (ख) अलंकारों का उल्लेख करें। 3

प्र.9:- निम्नलिखित प्रश्नों में से किन्हीं तीन का उत्तर लिखिए ।-  $2 \times 3 = 6$

- (क) 'आओ, मिलकर बचाएँ' कविता में दिल के भोलेपन के साथ-साथ अकंखड़पन और जुझारूपन को भी बचाने की आवश्यकता पर क्यों बल दिया गया है ?
- (ख) 'चंपा काले काले अच्छर नहीं चीन्हती' भीर्शक कविता में चंपा ने ऐसा क्यों कहा कि कलकत्ता पर बजर गिरे ?
- (ग) पानी के रात भर गिरने और प्राण-मन के घिरने में परस्पर क्या संबंध है ? घर की याद कविता के आधार पर स्पष्ट करें।
- (घ) किसान की पत्नी और उसकी बच्ची की मृत्यु के लिए आप किसे दोषी मानते हैं और क्यों ? 'वे आँखें' कविता के आधार पर उत्तर दीजिए।

प्र.10:- निम्नलिखित गद्यांश से संबंधित प्रश्नों के उत्तर दीजिए- $2+2+2=6$

नौकरी में ओहदे की ओर ध्यान मत देना, यह तो पीर का मजार है। निगाह चढ़ावे और चादर पर रखनी चाहिए। ऐसा काम ढूँढना जहाँ कुछ ऊपरी आय हो। मासिक वेतन तो पूर्णमासी का चाँद है जो एक दिन दिखाई देता है और घटते-घटते लुप्त हो जाता है। ऊपरी आय बहता हुआ स्रोत है जिससे सदैव प्यास बुझती है। वेतन मनुश्य देता है, इसी से उसमें वृद्धि नहीं होती। ऊपरी आमदनी ईश्वर देता है, इसी से उसकी बरकत होती है, तुम स्वयं विद्वान हो, तुम्हें क्या समझाऊँ ।

- (क) यह किसकी उक्ति है ?
- (ख) मासिक वेतन को पूर्णमासी का चाँद क्यों कहा गया है ?
- (ग) क्या आप एक पिता के इस वक्तव्य से सहमत हैं ?

अथवा

फ़िल्म का काम आगे भी ढाई साल चलने वाला है , इस बात का अंदाजा मुझे पहले नहीं था। इसलिए जैसे-जैसे दिन बीतने लगे, वैसे-वैसे मुझे डर लगने लगा। अपू और दुर्गा की भूमिका निभाने वाले बच्चे अगर ज्यादा बड़े हो गए, तो फ़िल्म में वह दिखाई देगा ! लेकिन मेरी खुशकिस्मती से उस उम्र में बच्चे जितने बढ़ते हैं, उतने अपू और दुर्गा की भूमिका निभाने वाले बच्चे नहीं बढ़ेंगे । इंदिरा ठाकरुन की भूमिका निभाने वाली अस्सी साल उम्र की चुन्नीवाला देवी ढाई साल तक काम कर सकी, यह भी मेरे सौभाग्य की बात थी।

- (क) दिन बीतने के साथ लेखक के मन में क्या डर बैठ गया ?
- (ख) लेखक किस बात में अपनी खुशकिस्मती मानता है ?
- (ग) फ़िल्म बनाने में लेखक को क्या-क्या कठिनाईयाँ आईं ?

प्र.11:- किन्हीं तीन प्रश्नों के उत्तर दीजिए ।

3+3+3=9

- (क) 'भूलो' की जगह दूसरा कुत्ता क्यों लाया गया ? उसने फ़िल्म के किस दृश्य को पूरा किया ?
- (ख) 'शिवशंभु' की दो गायों की कहानी के माध्यम से लेखक क्या कहना चाहता है ?
- (ग) धनराम मोहन को अपना प्रतिद्वंद्वी क्यों नहीं समझता था ?
- (घ) स्पीति के लोग जीवनयापन के लिए किन कठिनाइयों का सामना करते हैं ?

प्र.12:- निम्नलिखित प्रश्नों में से किन्हीं तीन के उत्तर दीजिए। 3+3+3=9

- (क) भास्त्रीय संगीत तथा चित्रपट संगीत में अंतर स्पष्ट कीजिए।
- (ख) पालरपानी से क्या समझते हैं ?
- (ग) तातुश ने बेबी हालदार के बच्चों के बारे में क्या कहा ?
- (घ) 'आलो-आँधारि' पाठ के आधार पर स्पष्ट कीजिए - लेखिका ने पार्क में जाना क्यों छोड़ दिया था ?

प्र.13:- पालरपानी, पातालपानी तथा रेजाणीपानी के बारे में आप क्या जानते हैं ? 6

अथवा

आलो-आँधारि पाठ किस प्रकार जन सामान्य के लिए प्रेरणास्रोत साबित हो सकता है?



D.A.V PUBLIC SCHOOL, DHURWA

CLASS – 11 Com

Final Exam (2017-18)

SUB : Accountancy

Time: 3 Hours

Maximum Marks: 90

**General Instructions**

1. This question paper contains two parts A and B.
2. All questions in both the parts are compulsory.
3. All parts of the questions should be attempted at one place.

**PART – A Financial Accounting I (50 Marks)**

1. Mr. Rahul works in a company. He presented a fake medical bill to the accounts department to claim medical reimbursement from office. Which value is not followed by Mr. Rahul ? [1]
2. Find out the capital if assets are ₹ 65,650 and liabilities are ₹ 35,350. [1]
3. What is meant by book of original entry ? [1]
4. State any three differences between Provision and Reserve. [3]
5. Explain the meaning and significance of Accounting Entity Principle. [3]
6. What do you understand by imprest amount in petty cash book ? [3]
7. A book keeper has submitted to you the following Trial Balance wherein the totals of the Debit and Credit balances are not equal :

Particulars	Debit (₹)	Credit (₹)
Capital	—	7,670
Cash in hand	—	30
Purchases	8,990	—
Sales	—	11,060
Cash at bank	885	—
Fixtures and fittings	225	—
Freehold Premises	1,500	—
Lighting and Heating	65	—
Bill Receivable	—	825
Returns Inward	—	30
Salaries	1,075	—
Creditors	1,890	—
Debtors	5,700	—
Stock at 1 April, 2014	3,000	—

Printing & Stationary	225	—
Bills Payable	1,875	—
Rates/taxes & Insurance	190	—
Discounts received	445	—
Discount allowed	—	200
	<b>26,065</b>	<b>19,815</b>

You are required to redraft the Trial Balance.

8. Explain the process of accounting. [4]
9. Enter the following transactions in cash book with bank column : [4]

2015	(₹)
Sept. 01 Bank balance	42,000
Sept. 01 Cash balance	15,000
Sept. 04 Purchased goods by cheque	12,000
Sept. 08 Sale of goods for cash	6,000
Sept. 13 Purchased machinery by cheque	5,500
Sept. 16 Sold goods and received cheque (deposited on same day)	4,500
Sept. 17 Purchased goods from Mridula for cash	17,400
Sept. 20 Purchased stationery by cheque	1,100
Sept. 24 Cheque given to Rohit	1,500
Sept. 27 Cash withdrawn from bank	10,000
Sept. 30 Rent paid by cheque	2,500
Sept. 30 Paid salary	3,500

10. Explain the qualitative characteristics of Accounting Information. [4]
11. From the following particulars of Sahitya Sadan, Darbhanga, prepare Bank Reconciliation Statement as on 31st Mar., 2015. [6]

	(₹)
(i) Overdraft as per Pass Book (31st Mar., 2015)	11,000
(ii) Cheques issued but not presented for payment.	600
(iii) Cheques paid but not collected.	11,800
(iv) Dividend collected and credited by the Bank which did not appear in Cash Book.	50
(v) Bank charges debited in the Pass Book but not yet recorded in Cash book	20
(vi) A Bank draft on the request of Sahitya Sadan was issued by the Bank, had not been recorded in Cash Book.	1,000

12. Give Journal Entries to rectify the following errors: [6]
- (i) ₹ 2,000 paid as wages for erection of new machinery, has been wrongly debited to wages account.
- (ii) ₹ 12,000 paid for repairs of Building, but the same has been debited to Building Account.
- (iii) Furniture purchased for ₹ 7,000, has been wrongly debited to purchases account.
- (iv) ₹ 10,000 paid on account of Salary to Manager Ashok, wrongly debited to his personal account.
- (v) An amount of ₹ 8,000 withdrawn by proprietor for his personal use, has been debited to Trading Expenses Account.
- (vi) ₹ 5,500 spent for white-washing the building, has been wrongly debited to Building Account.

13. The following balances appear in the books of M/s Kushwaha Sons: [6]

1 Jan., 2015	Machinery Account	₹ 40,000
1 Jan., 2015	Provision for Depreciation Account	₹ 18,000

On 1st Jan., 2015 they decided to sale a machinery for ₹ 4,350. This Machine was purchased in January 2011 for ₹ 8,000.

You are required to prepare 'Machinery A/c' and the 'Provision for Depreciation A/c' on 31st Dec., 2015. Assume the firm has been charging depreciation at 10% p.a. on Straight Line Method. [8]

Or

Ritesh and Naina were in need of funds temporarily. On August 01, 2015 Ritesh drew upon Naina a bill for ₹ 12,000 for 4 months. Naina accepted the bill and returned to Ritesh. Ritesh discounted the Bill @ 8% p.a. Half amount of the discounted bill remitted to Naina. On due date, Ritesh sent the required sum to Naina, who met the bill. Journalise the transaction in the books of both the parties. [8]

## PART – B Financial Accounting II

(40 Marks)

14. Wipro runs a not-for-profit organisation to provide quality education to poor students. Which value is followed by the company? [1]
15. Name the account which shows the classified summary of transactions of a cash Book in a not-for-profit organisation. [1]
16. What is the meaning of Statement of Affairs? [1]
17. Compute the Income from Subscription for the year 2015, from the following information relating to Hari Nagar Sports Club.

	1.1.2015	31.12.2015
Subscription received in advance	(₹) 5,000	(₹) 2,000

Total subscription received during the year 2015 is ₹ 20,000. There are 300 members, each paying ₹ 100 per annum. [3]

18. Mr. A started business with a capital of ₹ 2,50,000 on 1<sup>st</sup> April, 2014. He withdrew ₹ 40,000 for his personal use on 30<sup>th</sup> March, 2015. He sold his personal investment for ₹ 25,000 and brought the amount into the business. On 31<sup>st</sup> March, 2015, his assets stood at ₹ 1,25,000 and creditors at ₹ 20,000. You are required to prepare statement of Profit or Loss for the year ended 31<sup>st</sup> March, 2015. [3]
19. On the basis of the following information given below, calculate the amount of stationary to be debited to the Income and Expenditure Account of Good Health Sports Club for the year ended 31st March 2015.

Particulars	01-04-2014 (₹)	31-03-2015 (₹)
Stocks of stationary	8000	6000
Creditors for stationary	9000	11,000

Stationary purchased during the year ended 31<sup>st</sup> March 2015 was ₹ 47000. [3]

20. Write four advantages of Database Management System. [4]
21. Differentiate between Income & Expenditure Account and Profit & Loss Account? [4]
22. What are the main disadvantages of computerised accounting? [6]
23. Prepare an Income and Expenditure Account from the following particulars of Young Achiever's Club:

### Receipts and Payments Account

Receipts	Amount (₹)	Payments	Amount (₹)
To Balance b/d (1/4/2014)	32,500	By Salaries	31,500
To Subscriptions :		By Postage	1,250
2012-13                      2,500		By Rent	9,000
2013-14                      60,000		By Printing & Stationary	14,000
2014-15                      800	63,300	By Sports material	11,500
To Donations (Billiards table)	90,000	By Miscellaneous expenses	3,100

To Entrance Fees	1,100	By Furniture (1/10/2014)	20,000
To Sale of old magazines	450	By 10% Investments (1/7/2014)	70,000
		By Balance c/d	27,000
	<u>1,87,350</u>		<u>1,87,350</u>

**Additional information :**

- (a) There are 250 members each paying an annual subscription of ₹ 300.  
(b) ₹ 1,200 are still in arrears for the year 2012-2013 for subscription.  
(c) Value of sports material at the beginning and the end of year was ₹ 3,000 and ₹ 4,500 respectively.  
(d) Depreciation to be provided @ 10% p.a. on furniture. [6]
24. Prepare Trading and Profit & Loss Account and Balance Sheet from the following balances, relating to the year ending 31st March, 2015.

Heads of Accounts	(₹)	Heads of Accounts	(₹)
Capital	10,000	Wages	5,000
Creditors	1,200	Bank	1,000
Returns Outward	500	Repairs	50
Sales	16,400	Stock (1.4.2014)	2,000
Bills Payable	500	Rent	400
Plant and Machinery	4,000	Manufacturing Expenses	800
Sundry Debtors	2,400	Trade Expenses	700
Drawings	1,000	Bad Debts	200
Purchases	10,500	Carriage	150
Returns Inward	300	Fuel and Power	100

- (a) The closing stock was valued at ₹ 1,450.  
(b) Depreciate Plant and Machinery by ₹ 400.  
(c) Allow 5% interest on capital.  
(d) A sum of ₹ 40 is due for repairs.

Or

The following is the Trial Balance of Mr. S. Kapur on 31st March, 2015 :

Heads of Accounts	Debit (₹)	Credit (₹)
Cash in Hand	1,080	—
Cash at Bank	5,260	—
Purchases/Sales	81,350	1,97,560
Returns	1,360	1,000
Wages	20,960	—
Fuel and Power	9,460	—
Carriage on Sales	6,400	—
Carriage on Purchases	4,080	—
Stock (1.4.2014)	11,520	—
Building	60,000	—
Freehold land	20,000	—
Machinery	40,000	—
Salaries	30,000	—
Patents	15,000	—

General Expenses	6,000	—
Insurance	1,200	—
Drawing/Capital	10,490	1,42,000
Sundry Debtors/Creditors	<u>29,000</u>	<u>12,600</u>
	<u>3,53,160</u>	<u>3,53,160</u>

Taking into account the following adjustments, prepare Trading and Profit & Loss Account and the Balance Sheet :

- (i) Stock on hand on 31st March, 2015 is ₹ 13,600.
- (ii) Machinery is to be depreciated @ 10%.p.a and Patents @ 20% p. a.
- (iii) Salaries for the month of March, 2015 amounting to ₹ 3,000 were unpaid.
- (iv) Insurance includes a premium of ₹ 170 for 2015-16.
- (v) Wages include a sum of ₹ 4,000 spent on the erection of a cycle shed for employees and customers.
- (vi) A provision for Doubtful Debts is to be created to the extent of 5% on Sundry Debtors.

[8]

# D.A.V. Public School

## Sector – 3 Dhurwa Ranchi – 4

Class XI Commerce

Term III 2017-2018

FM – 80

Subject: Economics

Time –3.00 Hours

### PART A

#### Indian Economy

- Q.No. 01 to 04 = 1 Mark  
Q.No. 05 to 10 = 3 Marks  
Q.No. 11 to 13 = 6 Mark

### Part B

#### Statistics

- Q.No. 14 to 17 = 1 Mark  
Q.No. 18 to 23 = 3 Marks  
Q.No. 24 to 26 = 6 Mark

### Part A Indian Economy

1. State the infrastructural needs of a developing economy?
2. What is meant by word morbidity?
3. State the two forms of urban unemployment in India?
4. What is the main purpose of human Capital Formation?
5. Are the following worker – a beggar, a thief, a smuggler, a gambler? Why?
6. Find the odd man out
  - (i) Owner of a saloon
  - (ii) A cobbler
  - (iii) A cashier in Mother dairy
  - (iv) A tuition master
  - (v) Transport operator
  - (vi) Construction worker
7. Why is employment considered so important in the Indian development policy?
8. How is unemployment an economic as well as social problem?
9. Difference between formal sector and informal sector?
10. Low employment among women is a reflection of economic backwardness of a country. You have been asked to suggest the measures for increased employment opportunities for women.
11. What do you meant by Inflation in India point out what are the problem related to inflation?
12. In recent time you might have observe that prices of various lentils have risen sharply. Is the in the price due to decrease in supply or increase in demand? What measures can the government take to reduce the price of lentils?
13. What do you understand by infrastructure in India? How many types of

infrastructures.

### Part B Statistics

14. How is coefficient of Range calculated?
15. Give any one merit of Ranges as a measure of dispersion?
16. Give the formula for computing quartile deviation?
17. The mean deviation from median (MDM) is computer of the series is 20. Find the co efficient of mean deviation from median?
18. Give some differences between mean deviation and standard deviation?
19. If the co efficient of variation of X-series id 14.6% and that of Y – series is 36.9% and their mean are 101.2 and 202.25 respectively find their standard deviation?
20. Find the standard deviation by assumed mean method

X	10	20	30	40	50	60
Frequency	04	06	09	08	05	10

21. Calculate quartile deviation and its co efficient from the following data:

S.No.	01	02	03	04	05	06	07	08	09	10	11
Marks	10	15	20	25	30	35	40	45	50	55	60

22. What do you meant by measured of dispersion? How many types of measures of dispersion?
23. Distinguish between quantitative and qualitative data(difference basis only definition and examples)
24. Calculate the correlation co efficient between Husband and Wife

Husband	65	66	57	67	68	69	70	72
Wife	67	56	65	68	72	72	69	71

25. The Ranking of ten students in two subjects: A and B are as follows:

A	03	05	08	04	07	10	02	01	06	09
B	06	04	09	08	01	02	03	10	05	07

What is co efficient of Rank correlation?

26. Construct Index number of price for the year price of 2016 from the following data. Base year 2008. (Fisher's Method)

Commodity	2008		2016	
	Price	Quality	Price	Quality
A	10	30	12	35
B	09	10	11	15
C	08	15	10	20
D	06	20	07	25

# D.A.V. Public School

## Sector – 3 Dhurwa Ranchi – 4

Class XI Commerce

Term II 2017-2018

FM – 80

Subject: Business Studies

Time –3.00 Hours

1. What is meant by WTO? [1]
2. **Identify the document highlighted in the following statements:** [0.5X8=4]
  - i. This certificate specifies the origin of goods exports
  - ii. This document is issued by the commanding officer of the ship to the exports after the Cargo is located on the ship.
  - iii. This document is the most appropriate and secure method of payment to settle international transaction
  - iv. This document is prepare by shipping company
  - v. On the basis of this document customs office permission for the export
  - vi. This document is prepare by the imports and it shows the details of goods imported and is used by custom authorities to determine import duty
  - vii. On the basis of this document imported goods are unloaded from internal trade
3. What do you mean by vending machine? [1]
4. **Write full form** [0.5X4=2]
  - a. COD
  - b. FOB
  - c. CIF
  - d. E&OE
5. What do you understand by internal trade? How many types of internal trade? [3]
6. **Briefly define** [3]
  - a. Debit note
  - b. Credit note
7. What are the difference between whole seller and retailer?(5 point write) [3]
8. How many types of retail trade? Define its characteristics of types of retail trade?(3 point write) [3]
9. What are the difference between public company and private company? [3]
10. What are the difference between equity shares and preferential shares? [4]
11. What do you meant by Debenture and Bond? What are the features of Debenture? [4]
12. How many types of Debenture shortly define? [4]



13. What are the difference between shares and debenture? [4]
14. **Write full form:** (Special Financial Institutions in India) [0.5X8=4]
- |         |        |          |         |
|---------|--------|----------|---------|
| a. IFCI | b. SFC | c. ICICI | d. IDBI |
| e. SIDC | f. UTI | g. LIC   | h. SBI  |
15. What do you meant by Commercial Paper? Merits of Commercial Paper? [4]
16. What do you meant by small business? Classification as per MSMED ACT, 2006? [5]
17. What are the role of small business in India? [5]
18. **Write full form** [1X5=5]
- |          |           |          |
|----------|-----------|----------|
| a. DIS   | b. NABARD | c. RSBDC |
| d. SIDBI | e. RWED   |          |
19. What is super market? What are the advantages of super market? [6]
20. What do you meant by WTO? What are object of WTO? [6]
21. What do you meant by joint ventures? What are the advantages of joint venture? [6]